

# STORAGE SUPPORT SOLUTIONS

# PDE

TECHNOLOGY CORPORATION

PRODUCTION • DESIGN • ENGINEERING

## SATA Hard Drive Enclosures

External Mini-SAS I/O

### External Mini-SAS/SAS Cables

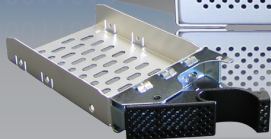
#### E304

Part#: 11-0505-MS  
11-0505-MS-LT (Locking Drive Trays)



#### E302

Part#: 11-0504-MS  
11-0504-MS-LT (Locking Drive Trays)



Drive trays are interchangeable between rackmount and desktop units (Locking Drive Trays Available)

#### 1U Rackmount Enclosure

Part#: 11-0513-MS  
11-0513-MS-LT (Locking Drive Trays)



External Mini-SAS to Multilane  
8088-8470



External Mini-SAS to Mini-SAS  
8088-8088

## HIGHER BANDWIDTH | SCALABILITY | COST EFFICIENCY | FUTURE TECHNOLOGY

- Provides an external housing solution for removable 3.5" hard disk drives with power, cooling, and interface.
- Turnkey solution includes:
  - Drive Trays
  - Data Cables
  - Drive Mounting Hardware
- Highest quality on the market
  - First Tier Power Supply and Fan
  - PDE is ISO 9001 Certified OEM
  - 1 Year Warranty

- Contemporary Design
  - Rear Mounted Power Switch
  - Standard Bezel with Area for Labeling (E302 & E304)
  - Silver with Black Trays (E302 & E304)
  - Aluminum Construction
- Custom OEM Options Available
  - Custom Colors
  - Silk Screen
  - Custom Printed Packaging
  - Bulk OEM Pack
- Designed to exceed requirements for 15,000 RPM

#### Mini-SAS/SAS:

- Higher bandwidth with its point-to-point serial data stream between the initiator and target.
- Great for high capacity SATA hard drives with the ease and reliability of a Mini-SAS / 8088 connection.
- Compatible with SATA, higher bandwidth, robust connectors, and optimal signal to noise ratio.

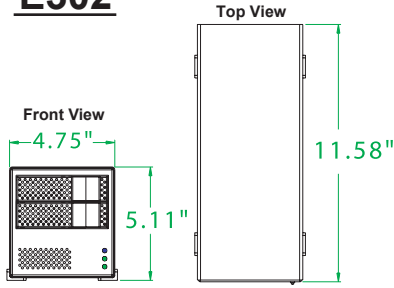
PDE TECHNOLOGY CORPORATION  
[www.pdetechology.com](http://www.pdetechology.com)

Distributed by:

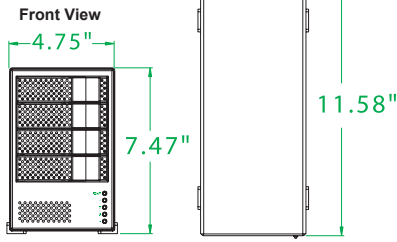
**Headquarters**  
11522 Markon Drive  
Garden Grove, CA 92841  
Phone: 714-799-1704  
Fax: 714-799-1705  
E-mail: [info@pdetechology.com](mailto:info@pdetechology.com)

**European Office**  
United Kingdom  
Phone: 44 (0) 1252 879633  
E-mail: [info@pdetechology.co.uk](mailto:info@pdetechology.co.uk)  
Sales E-mail: [sales@pdetechology.co.uk](mailto:sales@pdetechology.co.uk)

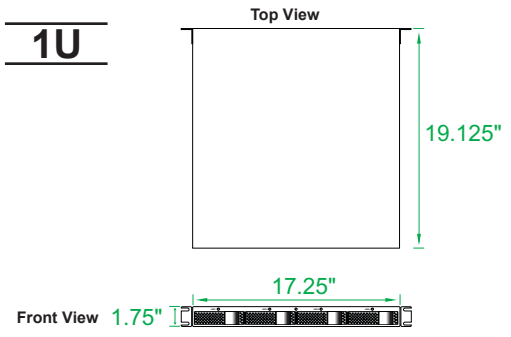
### E302



### E304



### 1U



#### COOLING SYSTEM

##### High Volume Cooling Fan

Dimensions	60x60x25mm
Airflow	18 CFM
QTY	1

#### POWER SUPPLY UNIT

PSU Watts	65W
QTY	1

#### PART NUMBERS

11-0504-MS: 2 Sata Drive - 8088 Mini-SAS I/O
11-0504-MS-LT: 2 Sata Drive - 8088 Mini-SAS I/O (Locking Drive Tray)

#### I/O CUTOUTS

Slot (C50)	2
------------	---

#### HARDWARE AND ACCESSORIES

Power Cord	1
------------	---



Mini-SAS I/O

#### COOLING SYSTEM

##### High Volume Cooling Fan

Dimensions	80x80x25mm
Airflow	33 CFM
QTY	1

#### POWER SUPPLY UNIT

PSU Watts	200W
QTY	1

#### PART NUMBERS

11-0505-MS: 4 Sata Drive - 8088 Mini-SAS I/O
11-0505-MS-LT: 4 Sata Drive - 8088 Mini-SAS I/O (Locking Drive Tray)

#### I/O CUTOUTS

Slot (C50)	4
------------	---

#### HARDWARE AND ACCESSORIES

Power Cord	1
------------	---



Mini-SAS I/O

#### COOLING SYSTEM

##### High Volume Cooling Fan

Dimensions	40x40x20mm
Airflow	7-8 CFM
QTY	3

#### POWER SUPPLY UNIT

PSU Watts	200W
QTY	1

#### PART NUMBERS

11-0513-MS: 4 SATA Drive - 8088 Mini-SAS I/O
11-0513-MS-LT: 4 SATA Drive - 8088 Mini-SAS I/O (Locking Drive Tray)

#### I/O CUTOUTS

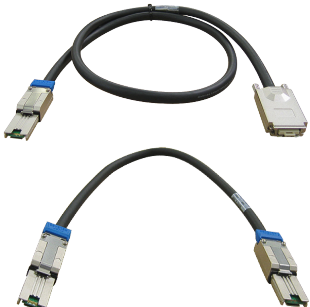
Slot (C50)	4
------------	---

#### HARDWARE AND ACCESSORIES

Rackmount Bracket	2
Power Cord	1



Mini-SAS I/O



#### External Mini-SAS 8088 - Multilane 8470 Cable

29-1295	External 8088 - 8470 Cable, 1M
29-1296	External 8088 - 8470 Cable, 2M

#### External Mini-SAS 8088 - Mini-SAS 8088 Cable

29-1290	External 8088 - 8088 Cable, 1M
29-1291	External 8088 - 8088 Cable, 2M
29-1293	External 8088 - 8088 Cable, 3M



www.pdetechology.com



### TESTING PROCEDURE

Hi Pot • Ground • Voltage • Cosmetic • Electrical • Continuity • Functionality • Mechanical • Cooling System • Power Supply w/ Load

\*Specs subject to change without notice